



Animal Cremation Series

Model G-20

Specifically Designed For :

- Humane Societies
- Animal Control Facilities
- Private Pet Cremation Services
- Veterinary Practices

Capacity

G-20

2,000 lbs Batch Load Capacity

Easy To Load --- Easy To Operate

21" Load Height

66" Diameter Load Opening

No Visible Emission - No Odors

Meets State And Federal Regulations

No Grease Leakage

Built In Liquid Retention Dam

Built For Long Life

Constructed Of 3/16" Plate Steel, Lined With 1" 1,900 Insulation And 3" Heavy Duty Refractory

Pre-piped & Pre-wired And Assembled At Factory

(Stack Sections Installed On Site)

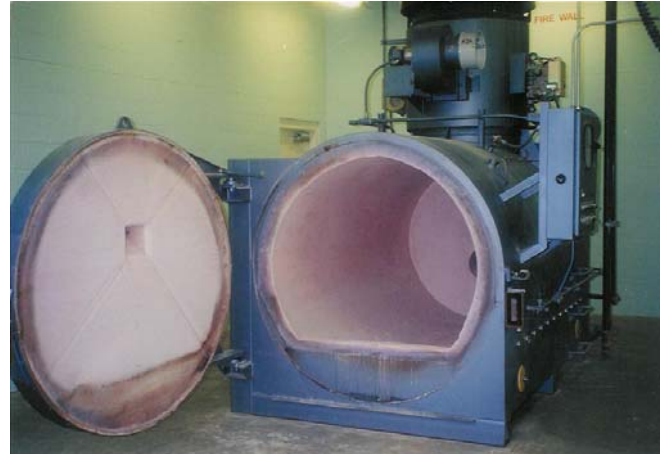
Automatic Temperature Control For Maximum Efficiency

Fuel Saving Feature Of High - Low Control for Secondary Burner

On - Off Control for Primary Burner

Fuel Saving Preheated Air For Primary & Secondary Chambers

Timer Controls For Burn Cycle



CONSTRUCTION	G-20-P
Dimensions: W x L x H	84" x 162" x 324"
Primary Chamber Volume	123.8 Cu. Ft.
Stack Sections, 34" x 6' Flanged	Total 18'
(12 Gauge With 3" 2,300°F Refractory Lining)	
Load Door Lined With Hi-Temp Composite	4"
Ash Removal Door Opening	66" Diameter
Primary Burner Firing Rate	1,350,000 BTU Avg.
Secondary Burner Firing Rate	1,600,000 BTU Avg.
Control Panel, NEMA 12, U.L. #508A	Included
Natural Gas Requirements	2,950 CFH
Electrical Requirements	220/60/1 40AMP
Paint & Primer, Hi-Temp	800°F To 1,200°F
Weight	24,683 Pounds

Recommended Size-Room or Pad
with Fence : 18' x 25'

Recommended Pad Size: 12' x 22'

Distributed by:

Bestech Environmental Resources, Inc.

138 Industrial Park Drive

Woodstock, AL 35188

Phone: (205) 428-0210 Fax: (205) 428-0211

www.bestechinc.com – info@bestechinc.com